

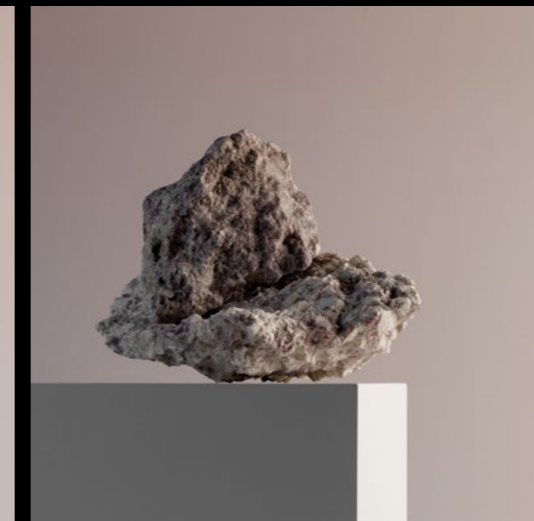
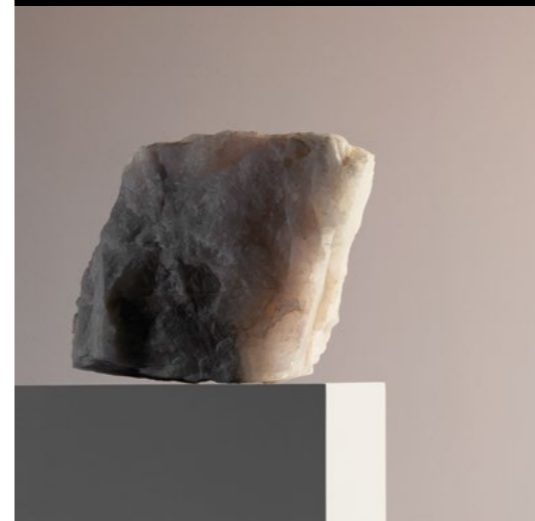
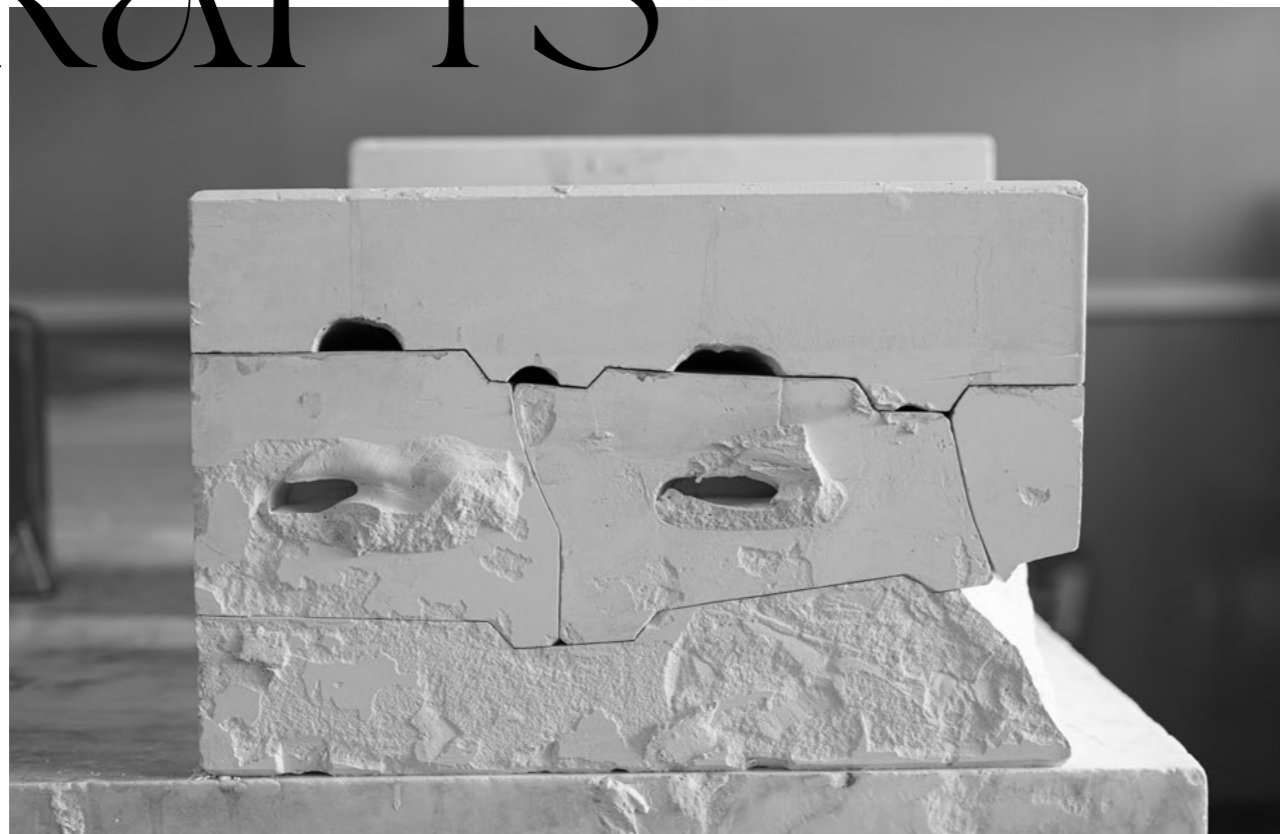
THE PORCELAIN REVOLUTION

DESIGN



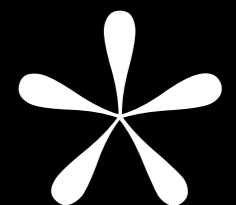
LLADRÓ

AN EXTRA MEASURE OF DESIGN, ART AND CRAFTS



BREAKING THE MOLDS OF CONTEMPORARY PORCELAIN

Following many decades dedicated to handcrafted porcelain creations, here we are compiling some prime examples of our more experimental side, born from an irrevocable need to push the envelope of porcelain and the tireless quest to fulfill this aim.





The results are creations that have evolved until becoming benchmarks of contemporary design that captivate us with their bold forms and surprising decorations.

At a moment when the connection between crafts and design is accruing more and more importance and the human touch adds incalculable value to the way a society perceives the

objects it produces, the creations on view here could be perceived as a passionate plea for the role design and art in porcelain can play in our lives. Much more than purely decorative or functional, it conveys humanity, emotion and diversity. Because, if there is one thing that reconnects us with life then that is unquestionably the beauty, character and essence of what surrounds us.



We invite you to enjoy this overview of completely diverse creations, all underpinned by a handcrafted quality that, in addition, provides a sense of continuity with our past.

LLADRÓ

DESIGN

_HANDMADE PORCELAIN





CREATIONS IN WHICH
DESIGN IS COUPLED
WITH TRADITIONAL
CRAFT PROCESSES,
REVITALIZING AND
KEEPING THEM
ALIVE, GIVING THEM
A NEW IDENTITY,
SUSTAINABILITY AND
DIFFERENTIATION.

INDEX

#ThePorcelainRevolution



DESIGN collections

- 12 THE GUEST A DESIGNER'S PLATFORM
- 58 EMBRACED BY JAIME HAYON
- 66 THE FANTASY BY JAIME HAYON
- 74 KINGS OF THE SEA
- 78 AWESOME INSECTS
- 84 BOLDBLACK
- 88 BOLDBLUE
- 92 THE DREAMER BY LALOU
- 96 FIERCE PORTRAITS
- 102 INK
- 108 STAR WARS
- 112 MICKEY AND MINNIE
- 116 CHINESE ZODIAC
- 120 ORIGAMI
- 126 RECYCLOS BY BODO SPERLEIN & COMMITTEE
- 132 FACE2FACE
- 134 LIFE IS FLOWER BY YASUMICHI MORITA
- 136 UNUSUAL FRIENDS
- 140 KAWKI BY ALEKSANDRA ŽEROMSKA
- 144 ANIMAL JEWELS

_EDITORIAL 146 ART OF THE TABLE
PARROT / CORAL / TOUCAN

_EDITORIAL 154 SHAPES & COLORS
THE FLAMINGOS / STARLING /
WILD TOTEMS / TURTLES / THE FAMILY PORTRAIT /
THE ROCKING CHICKEN RIDE / UNDERWATER / WHALES
MACAW / BIRD BOXES

170 LLADRÓ AT HOME

171 TECHNICAL SECTION

THE GUEST COLLECTION

12

A DESIGNER'S PLATFORM

"Today, art's ability to make us dream, imagine, reflect and even aspire is really important. Artistic explorations increasingly evince this special way of projecting ourselves in realities that move us and make us feel."

-Jaime Hayon

Can an artwork in porcelain have many faces, come from different countries and express itself in varied iconographic languages? Can it be the work of a single artist and at the same time the sum of many? The answer is yes, and it is known as The Guest.

The Guest is Lladró's most captivating character. Ever since its creation by the renowned designer Jaime Hayon, The Guest has been a blank canvas on which celebrated artists have intervened to tell all kinds of stories.

After seducing Hayon, the passion for detail of Lladró artisans has also won over Paul Smith, Tim Biskup, Devilrobots, Gary Baseman, Rolito.... These and other artists are invited to join a party of concepts, designs and colors, applied on the same canvas: an irreverent yet distinguished sculpture which has become a 21st-century icon.

Today these collaborations continue to demonstrate that tradition is open to experimentation and can take the most unexpected and conceptual paths.

13



INTERVIEW

WITH
JAIMIE HAYON



14

THE GUEST, A BRAND ICON

15

One thing that you can claim without a shadow of a doubt is that The Guest is an icon of Lladró's New Concept category. Its designer, Jaime Hayon, talks to us about the beginnings of this transcendental project, his vision, the initial steps, the challenges ... An interview addressing the ambition and creative possibilities of porcelain in The Guest, an always unique and contemporary character.

How did The Guest come about?

I recall it as a time of frenetic activity but above all I remember exactly what I wanted to do. I had been working for several years in Hong Kong on the design of toys in vinyl and I was intrigued by the idea of customization and collecting. That's why, from the first day I started to work with Lladró, I wanted to transfer that idea from vinyl to porcelain; to take the iconographic part of urban collectible toys to more traditional porcelain. I was really attracted to the idea, because it was a kind of experiment in mixing two different worlds, of seeing what would happen, what the result would be.

And the truth is that we were very happy right from the very first tests. There was something in the sculpture, an energy, that caused a great impression, and I believe that's why it got off to such a fantastic start and has continued being such a great success.

How did you arrive at this character?

I wanted it to reflect my world and so I gave it some of my gestures. It has the forms I draw, but at the same time I also envisaged a development of the straight lines of collectible toys, without a lot of gestural quality but with strong graphics. My idea was to look for a figurative object that would have a touch where you would notice the porcelain, realize that it was not that simple, that it had a subtle gesture that shows it is handcrafted and that it would be a little human but at once not. In other words, it would be a young boy but it wouldn't be childlike, which is why it doesn't have a face or eyes ... the idea was for it to be somehow neutral. Those details were very important when it came to creating the object. And it was no easy task because the Lladró sculptors always pay such close attention to the face, which is normally so important for the expressiveness of a sculpture. A smile, a wink, or eyes looking up or down can change the message you wish to convey.

So when I said to them "don't give it a face" the response from the Lladró team was so interesting. They were shocked, but I didn't want a face because the idea is that everybody would give it their own face. And though at first it sounded a little crazy I think that in the end it is what gives the piece such strength. It is all about simplicity.

“SOMETIMES IT IS A QUESTION OF DOING LESS AND EXPLORING ONE THING IN GREATER DEPTH, MAKING IT MORE MEMORABLE.”

16

WHAT WAS IT LIKE TRANSLATING THE IDEA OF THE GUEST TO PORCELAIN?

It actually turned out to be really simple and rewarding because I discovered something that you only realize when you work with Lladró and which most people don't know, and that is that every single creation is like the actor in a movie. Everything you do to it, however small, tells a story.

The gestures are so important, and it has a lot to do with whether the fists are closed, whether it is standing or reclining and so on. The pose can transmit a sense of defeat or of determination. That is why The Guest is such a proud character, a guest who wishes to stay, who looks at you like the artist wants it to look at you. A character that can express itself through the graphics of creatives from anywhere in the world. That is the strength it has and a strength that is destined to last a long time.

COULD YOU TELL US MORE ABOUT THE COLLABORATIONS WITH OTHER ARTISTS?

The initial concept was very clear, which was to offer variety in the same creation so that collectors would want to have more than just one. That's why we had to ensure such wide creativity. And the best way to do that was through the intervention of different artists. In addition, we wanted to discover local artists, to give a voice to artists from different disciplines, to encourage the exchange of graphics. The idea was to give an opportunity to other artists to express themselves, to do with The Guest whatever they felt like doing and for this reason it has a double meaning. On one hand, it enters your home as a guest, and on the other, the guest artist who intervenes in its creatively, who renders their vision and their own story.

DO YOU BELIEVE THAT THE GUEST COULD BE EXPANDED TO OTHER CHARACTERS?

I think it's perfect as it is, because the idea of repetition has made it a brand icon. Lots of people around the world identify it with the brand and look forward to finding out who the next guest artist will be. So I don't really see the need to extend the family. The Guest could be bigger or smaller, but I don't envisage a family with new characters. But if there were, they would be equally unique, they would say different things and tell other stories. They would be actors starring in another movie.

Sometimes it is a question of doing less and exploring one thing in greater depth, making it more memorable. It is the only object that changes throughout its evolution. We shall see where it will take us, but one thing for sure is that it has a lot of surprises still in store for us.



© James Mollison

17

WITH **JAIIME HAYON**
AT **BARCELÓ TORRE DE MADRID HOTEL**

18



THE ORANGE GUEST - Little

RESTAURANTS, BOUTIQUES, HOTELS, EXHIBITIONS... JAIME HAYON IS CONSTANTLY CAUGHT UP IN THE MIDDLE OF PROJECTS THAT BEAR HIS UNMISTAKABLE STAMP IN CITIES LIKE NEW YORK, PARIS, KUWAIT, LONDON OR MADRID.

19

THE WHITE GUEST - Big





20

LLADRÓ

DESIGN

PURPLE NOW YELLOW

_THE GUEST COLLECTION



Barceló Torre de Madrid Hotel
Lobby

21

BY JAIME HAYON



22

THE GOLDEN GUEST - Little THE SILVER GUEST - Little THE GUEST BY ROLITO - Little



23

Barcel6 Torre de Madrid Hotel
Garra Bar

“

I WAS FULLY DEDICATED TO THE CREATION OF A VERY SPECIAL AND UNIQUE SPACE THAT WOULD REPRESENT A NEW VISION OF SPAIN, A VISION FAR FROM THE TRADITIONAL AESTHETIC, ASIDE FROM BEING MY HOMETOWN, FOR ME MADRID REPRESENTS SPAIN'S DIVERSITY AND RICHNESS.

”

THE ARTIST EXPRESSES HIS CREATIVITY IN THE CONCEPTION OF SPACES AND IN ALL THE OBJECTS CONTAINED IN THEM, WHETHER BIG OR SMALL. ALL ELEMENTS ARE CAREFULLY DESIGNED DOWN TO THE TINIEST DETAIL, CONVEYING HAYON'S COLORIST ENERGETIC VISION IN ATTRACTIVE YET FORCEFUL FORMS. EVERYTHING CONCEIVED TO PRODUCE PLEASING SENSATIONS AND ALSO TO RAISE A SMILE.

A GOOD EXAMPLE IS HOTEL BARCELÓ TORRE DE MADRID, A SETTING INSPIRED BY THE ROOTS, CULTURE AND HISTORY OF SPAIN, UPDATED THROUGH THE LENS OF HAYON. A MUST-VISIT PLACE IN WHICH THE GUEST IS PERFECTLY AT HOME.



THE GUEST BY TIM BISKUP - Little



Barceló Torre de Madrid Hotel
Lobby

THE GUEST BY TIM BISKUP - Little

THE YELLOW GUEST - Little



26

THE RED GUEST - Little
THE GREEN GUEST - Little



THE WHITE GUEST - Little
THE WHITE GUEST - Big



27

BY JAIME HAYON





Barceló Torre de Madrid Hotel
Suite Real

THE GUEST BY RICARDO CAVOLO - Big & Little THE BLACK GUEST - Big & Little



THE GUEST COLORS BY LLADRÓ

32

If there is one thing that characterizes Lladró's work, then that is its vast palette of colors. From pastel tones to more intense or on-trend metallic colors, the options developed by the brand to decorate on porcelain give free rein to the creativity of invited guest artists and have also allowed them to play with The Guest with all the power of monochrome. Because The Guest dazzles and captivates, whatever its color.

LLADRÓ

DESIGN

_THE GUEST COLLECTION

THE SILVER GUEST - Little
THE GUEST Little - PURPLE ON YELLOW
THE GOLDEN GUEST - Little



33

BY JAIME HAYON

THE RED GUEST - Little
THE ORANGE GUEST - Little
THE YELLOW GUEST - Little
THE BLUE GUEST - Little
THE GREEN GUEST - Little



34



35





© James Mollison

THE BIRTH OF AN ICON

This collection started with guests designed by its creator, Jaime Hayon. The artistic universe of this Madrid-born artist, with a focus on craft and cutting-edge applied to design, is reflected in pieces full of knowing nods to key themes in the brand's history, such as love and childhood. With a subtle sense of humor, from a "boundary pusher" who believes that Lladró's savoir faire is totally unique. As he himself says, "I wanted to be part of the company's evolution, my intention was never a revolution. For several generations, its artisans have accrued control over an art form and techniques. My task was to add that extra contemporary touch".

Jaime Hayon speaks a unique yet internationally recognizable creative language. His style, which blurs the lines between art, decoration and design, impregnates everything he creates, whether it be furniture, products, interiors or art installations. The materials he chooses are always noble and with a history attached, because he knows that it gives his playful tone elegance and body. His successful trajectory led him to be included in the Times magazine list of the hundred most significant creators of our time while Wallpaper named him as one of the most influential artists of recent decades.

36

THE **GUEST** BY

JAIIME
HAYON

LLADRÓ

DESIGN

_THE GUEST COLLECTION

Limited Edition
Size Big
01007278

Numbered edition
Size Little
01007283



37

BY JAIIME HAYON

TROMPE L'OEIL ART

"The main source of inspiration for my intervention on The Guest is the study of architectural forms and the way in which they interact with space. I create trompe l'oeils applied in 2D with a 3D optical effect, playing with color and patterns." This is how Camille Walala describes her experience with our most iconic character.

After graduating in textile design, Camille Walala set up her own studio and brand in East and soon earning a name for her radical illustrations. Her enthusiasm for graphic patterns and the use of color has given shape to a highly recognizable body of work acclaimed across the globe. Her versions of The Guest are full of contrasts, combining bright colors with intricate designs. The "slightly imperfect" abstract forms and hand-drawn lines create a dynamic and powerful visual effect.

Limited Edition
Size Big

01007761

Numbered edition
Size Little

01007762



38

THE **GUEST** BY

CAMILLE WALALA

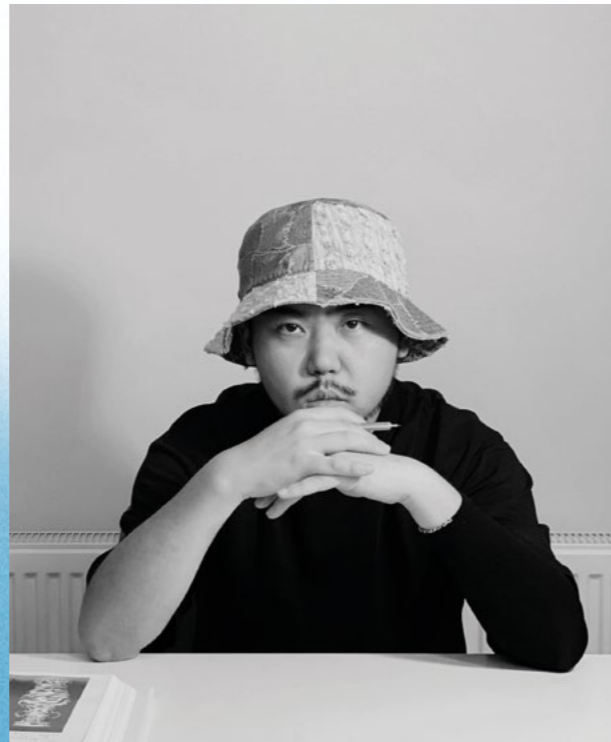
LLADRÓ

DESIGN

_THE GUEST COLLECTION



PAST, PRESENT AND FUTURE



The Guest by Kzeng seeks to render his cultural roots through symbols of traditions like Chinese facial painting or flower painting from the Song dynasty, reinterpreting these elements in his own personal style. In the case of the large The Guest, for instance, he is portrayed with three big eyes on his face which, according to Kzeng, "allow him to see the past, present and future as if he were a messenger travelling through time." As regards to color, Kzeng chose blue tones on the white porcelain to ensure a sense of visual harmony and balance. He then combines these colors with touches of golden luster in order to convey the prestige associated so closely with ancient Chinese porcelain. The end results are two striking yet serene creations.

Kzeng Jiang is the first Chinese artist to join the creative universe of The Guest. Based in Shanghai, his work captures the contemporary culture of the East and big brands transformed into cult iconography through vibrant, radical illustrations.

THE GUEST BY KZENG JIANG

LLADRÓ DESIGN

_THE GUEST COLLECTION

01007757 Limited Edition Size Big

01007758 Numbered edition Size Little



BY JAIME HAYON

A CAT AND DOG PARTY

"These are pieces that I would like to have at home. Optimistic, fun, happy, full of color and sense of humor, that's what makes them Smithy." This is what Britain's foremost designer had to say about The Guest sculptures he customized for this collection and its eccentric creative universe. A cat and a dog, Lladró and Paul Smith, strewn with confetti and covered with masks, these pieces bring together two seemingly opposite poles. *"Each one is created and painted by hand in the Lladró workshops in Valencia, something which is increasingly more unusual in our computerized and mechanized world"* Sir Paul concluded.

Paul Smith is one of Great Britain's foremost designers. Known for a creative aesthetic that combines tradition and modernity, he claims that "you can find inspiration in everything", and that his references are eclectic, coming from high art and everyday life. Each Paul Smith design is underpinned by a dry British sense of humor: quirky but not frivolous, eccentric but not silly.



42

THE GUEST BY PAUL SMITH

01007730 Limited Edition Size Big

01007731 Numbered edition Size Little



43

LOVABLY BITTERSWEET

"The beauty of the bittersweetness of life" is how the US designer Gary Baseman describes the artistic realm he explores in his works. This mission, reflected in painting, fashion and toy design, is now taken to porcelain, as if it were yet another canvas. Bold forms are drawn in soft pink and violet, in categorical black and brown, in pieces with an otherworldly touch that ooze pure magnetism.

Gary Baseman is a multifaceted artist: painter, illustrator, video and performance artist, animator, film and television producer, toy designer and exhibition curator. He is the designer of the bestselling board game Cranium, and the animation series "Teacher's Pet", for which he won three Emmy and BAFTA awards, and earned him a place on Entertainment Weekly's list of "Most Creative People". According to The Los Angeles Time, his art is "adorably perverse".



THE **GUEST** BY

GARY BASEMAN

Limited Edition
Size Big
01007889

Numbered edition
Size Little
01007890





01007752 Limited Edition
Size Big

01007753 Numbered edition
Size Little

VISUAL POETRY

The Guests by Henn Kim, a rising star of contemporary illustration, speak to us of the world in which we live and our role in it. In the large The Guest, galaxies and stars symbolize the vastness of our always captivating planet. In the small The Guest, with a sticking plaster over a heart and flowers, she conveys the sensation that, although there is often suffering, life always flourishes.

The South Korean illustrator Henn Kim looks on creativity as a form of emotional freedom. Based on poetic minimalism in black and white, her works are able to capture complex feelings with just a few brushstrokes, and make us think. The originality of her creations, popularized thanks to the expansive power of social media, has made her one of the most outstanding voices in today's creative universe.

46

THE GUEST BY HENN KIM

LLADRÓ

DESIGN

_THE GUEST COLLECTION



47

BY JAIME HAYON



01007897
Limited Edition
Size Big

01007898
Numbered edition
Size Little

LIGHTING UP DREAMS

Imagine a superhero of the night who, together with his partner, protects sleepers and wards off nightmares. This is The Guest by Rolito, the celebrated French designer and illustrator, who borrowed inspiration from his own son to personalize this couple of sculptures. "Working with Lladró was wonderful. They gave me the freedom to create with the fantastic organic material of porcelain. I concentrated on the textures because everything is painted by hand." With his magic pajamas and shiny feet, "he is a character who manages to make you feel safe and protected", he added.

Rolito is a character designer, illustrator and art director based in Europe. After completing multidisciplinary Beaux Arts studies in France, Rolito joined an innovative multimedia studio at the forefront of web content development. The first version of his personal website, Rolitoland, was a flash-animated microcosm that showcased his unique imagination, winning him many awards and accolades in festivals worldwide. This led him to collaborate with Sony Japan in the world of video games and ever since this artist has never stopped growing.

THE GUEST BY ROLITO

LLADRÓ

DESIGN

_THE GUEST COLLECTION



BY JAIME HAYON



PURE TOY AESTHETICS

Perfectly combined polka dots and stripes, cheerful colors and the sobriety of black, the pure Japanese toy aesthetic of Devilrobots is now transferred to Lladró porcelain. The artistic team who helped define the era of designer toys with their character To-Fu Oyako is behind this pair of The Guest. Bold, fun and extravagant, according to their creators, they express "a desire to speak about new paths and journeys."

Devilrobots is a Japanese design team specialized in character designs, illustrations, motion graphics and web art. As the creators of the recognizable To-Fu Oyako, one of Japan's most popular contributions to the toy world, they have demonstrated how a simple character can be turned into a useful and emotive medium.

50

Limited Edition
Size Big

01007280

Numbered edition
Size Little

01007285

THE GUEST BY DEVILROBOTS

LLADRÓ

DESIGN

_THE GUEST COLLECTION



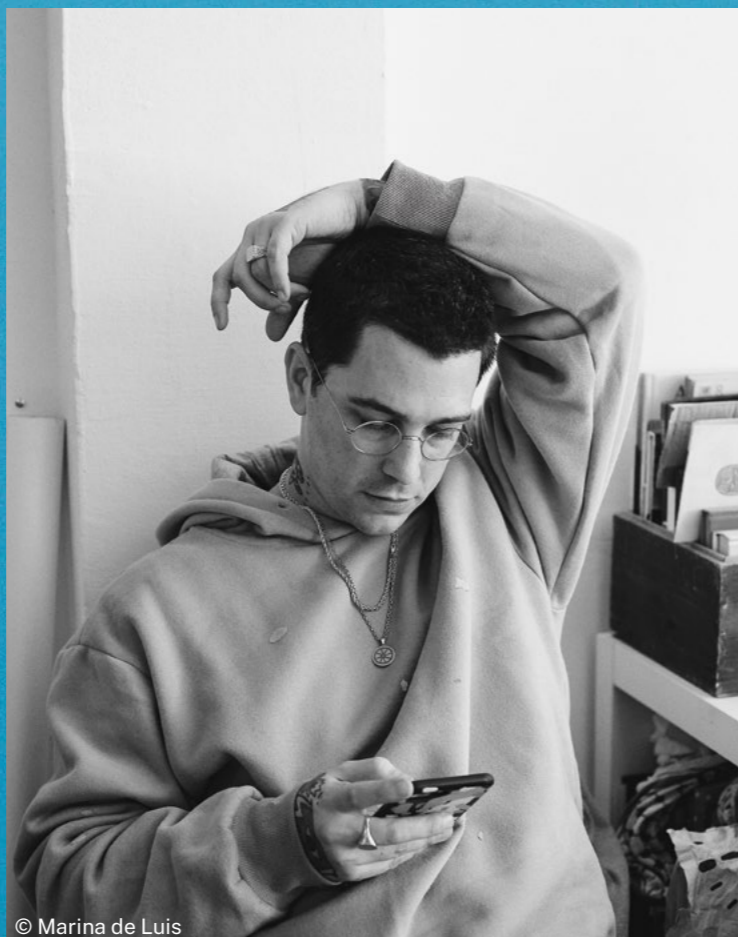
51

BY JAIME HAYON

LEGENDS & FANTASY

“When I received the invitation to create pieces for *The Guest* collection I knew that I would have to give the best of myself in order to be up to the challenge”. And he gave it his best. For these pieces the internationally renowned Spanish illustrator Ricardo Cavolo envisaged breath-taking imagery based on legends, fantasy nature and tattooed beings. And Lladró artists masterfully rendered his unique powerful iconography. Interestingly, here he depicts his own son and wife. His wife as a beautiful Armenian queen conveying strength, light and energy. And he places his son in a fantasy world of mountains, flowers, volcanoes and stars.

Ricardo Cavolo, after graduating in Fine Art and teaching drawing, entered the art world thanks to the passion transmitted by his father for handcrafted processes. His work is characterized by a faux naïf style applied using traditional techniques like colored pencils, watercolors or liquid inks. His illustrations speak of a powerful imagination, full of color and messages, and have won him a growing reputation among young audiences.



© Marina de Luis

Limited Edition
Size Big

Numbered edition
Size Little

01007747

01007748

52

THE **GUEST** BY

RICARDO CAVOLO

LLADRÓ

DESIGN

_THE GUEST COLLECTION



53

BY JAIME HAYON

01007279 Limited Edition Size Big

01007284 Numbered edition Size Little



© Justin Sullivan

54 HIDDEN MESSAGES

For the US artist Tim Biskup, The Guest project is "an elegant way of fusing fragmented geometric forms with the unquestionable artistic quality of Lladró's work." His ground-breaking theories in color and design are based on what he calls a 'populist esthetic'. And a secret: the drop on the small Guest is not a teardrop, but a symbol of connection with nature.

Tim Biskup is a multidisciplinary artist long recognized for his complex color and design theories and decidedly populist aesthetic. Over recent decades, his exhibitions in galleries and museums throughout the world have won him a legion of fans and collectors, propelled further by his steady output of limited edition prints, vinyl figures, books, records and other objects.

THE GUEST BY TIM BISKUP

LLADRÓ

DESIGN

_THE GUEST COLLECTION

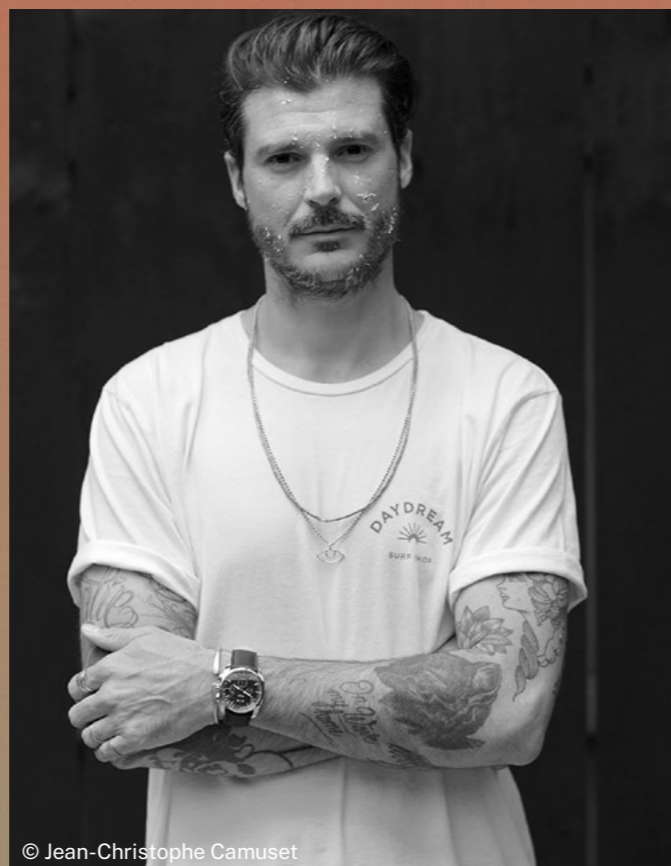


BY JAIME HAYON

WATER AND SUN

Guillaume Grando, aka Supakitch, is the creator behind two The Guests that seem to be rising from the water. And this is precisely the effect the artist was after, to capture the wealth of the plays of color of sunlight on the surface of water. A goal clearly achieved in these pieces, the first in the collection to have volume, that seem to rock us to the hypnotic rhythm of the waves.

Supakitch started off as a graffiti artist in the early-nineties and, since then, the fluidity called for by graffiti has been instrumental in shaping the sinuous brushstroke of his work. His creative projects focus on gesture, movement, liquid material, color and reflections of light.



© Jean-Christophe Camuset

56

01007755
Limited Edition
Size Big

01007756
Numbered edition
Size Little

THE GUEST BY SUPAKITCH

LLADRÓ DESIGN

_THE GUEST COLLECTION

57



BY JAIME HAYON

Embrace by JAYON

58

EMBRACE YOURSELF,
EMBRACE HAPPINESS.



59

ABOUT EMBRACED

EMBRACED PINK
>>>

60



A NEW DESIGN ICON

After creating *The Guest*, one of Lladró's most iconic characters, Jaime Hayon has collaborated with the brand once again in a creation called *Embraced*.

Embraced portrays a charming character hugging himself. In the words of the artist: "it represents to perfection the idea of looking after yourself. The character in *Embraced* is contorted to completely wrap around himself and be at one."

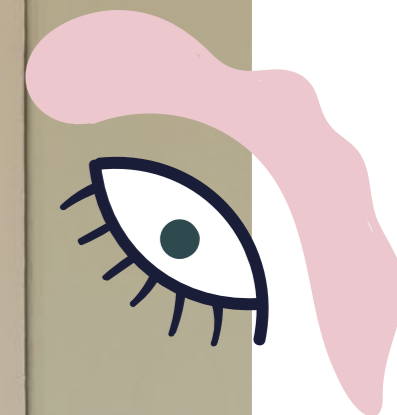
Embraced comes in three versions, one decorated with Hayon's signature designs while the other two are monochrome versions in soft pink and yellow colors.

LLADRÓ DESIGN

_EMBRACED



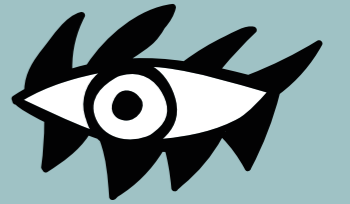
61





“IF WE DON’T LOOK
AFTER OURSELVES,
HOW CAN WE LOOK
AFTER OTHERS?”

JAIME HAYON





EMBRACE YOURSELF WITH HOPE AND OPTIMISM



<<< EMBRACED PINK AND YELLOW



AN ARTISTIC CHALLENGE

With Embraced, Jaime Hayon reinforces Lladró's commitment with the protection and enrichment of its craft legacy through contemporary and conceptual designs.

In this creation Hayon was looking for the beauty of the form and, more particularly, meaning and symbolism.

THE FANTASY COLLECTION

by Jaime Hayon



66



THE LOVER III >>>

LLADRÓ

DESIGN

#THEPORCELAINREVOLUTION

67



CREATIONS WHICH, EXPRESSED IN THE LANGUAGE OF LLADRÓ PORCELAIN, ITS KNOW-HOW AND UNIQUE ARTISAN PROCESSES, TAKE ON THE CATEGORY OF WORKS OF ART. PIECES THAT DEMONSTRATE LLADRÓ'S ABILITY TO GIVE FORM AND COLOR TO FANTASY.

68



^ SMALL CONVERSATION VASE
THE CLOWN LAMP >>>

LLADRÓ

DESIGN

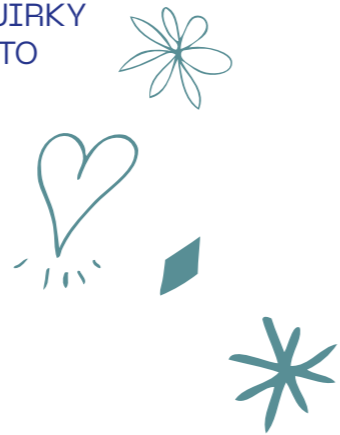
_THE FANTASY COLLECTION

69



LOVE, FAMILY, CHILDHOOD, THE CIRCUS...

THE CORE LLADRÓ THEMES ARE FILTERED THROUGH THE SPANISH DESIGNER'S QUIRKY SENSE OF HUMOR AND TRANSLATED INTO UNIQUE DESIGNER OBJECTS.



70



THE ROCKING CHICKEN RIDE >>>

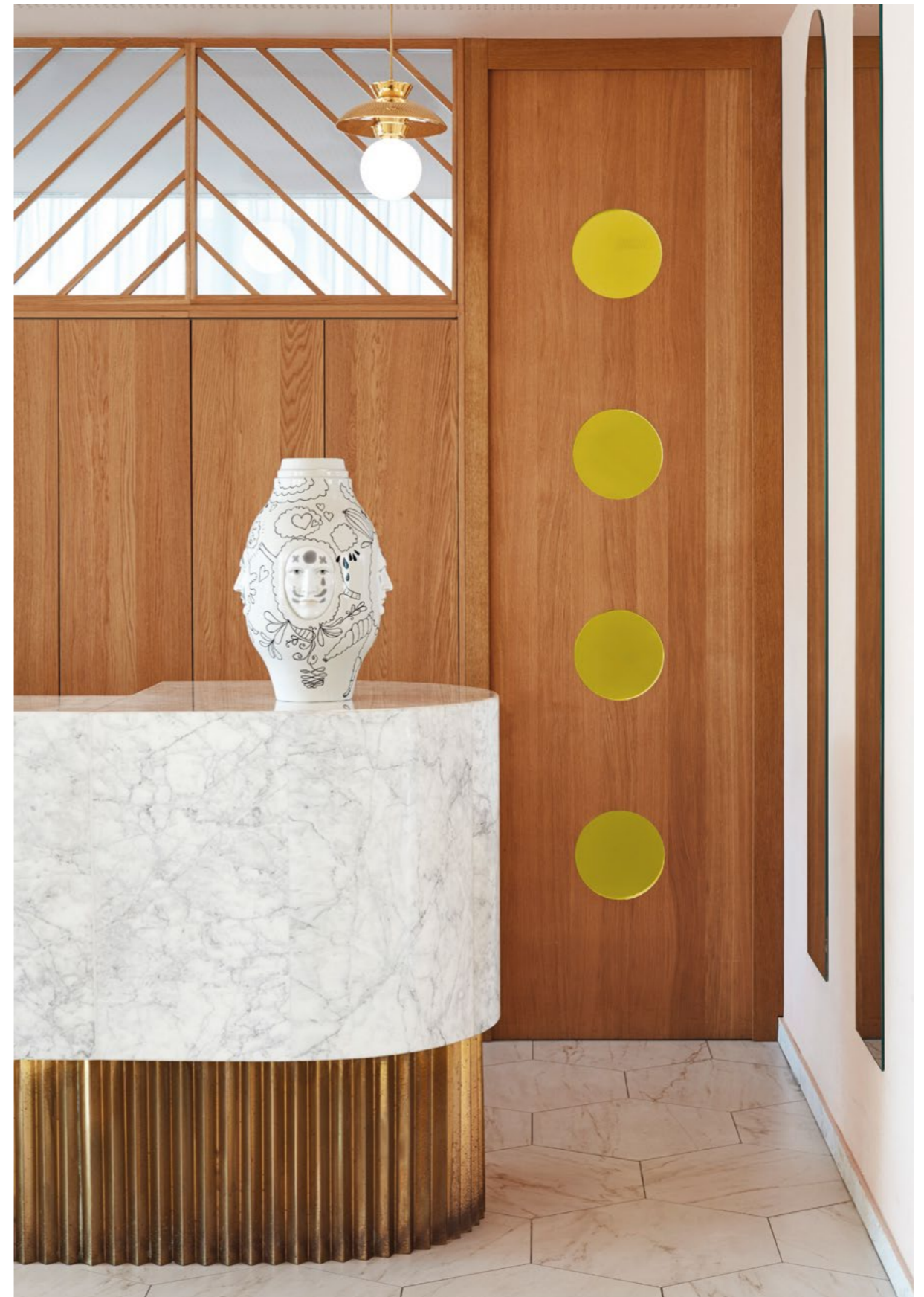
LLADRÓ DESIGN

_THE FANTASY COLLECTION

71



72



73

>>> THE LOVER II + CONVERSATION VASE I
^ CONVERSATION VASE II

KINGS OF



KINGS OF THE SEA IS A TRIBUTE TO THE STRANGE, VARIED, AND NUMEROUS CREATURES TO BE FOUND IN THE DEPTHS OF THE SEA. CREATIONS THAT STAND OUT FOR THE STRIKING DECORATION WITH INTENSE AND BRIGHT COLORS. A LOBSTER AND A CRAB THAT LOOK LIKE TWO FIERCE KNIGHTS IN ARMOR READY TO DEFEND ANY JUST CAUSE. SURPRISING AND SYMBOLIC ANIMALS HANDCRAFTED IN PORCELAIN.

THE SEA

LLADRÓ

DESIGN

#THEPORCELAINREVOLUTION

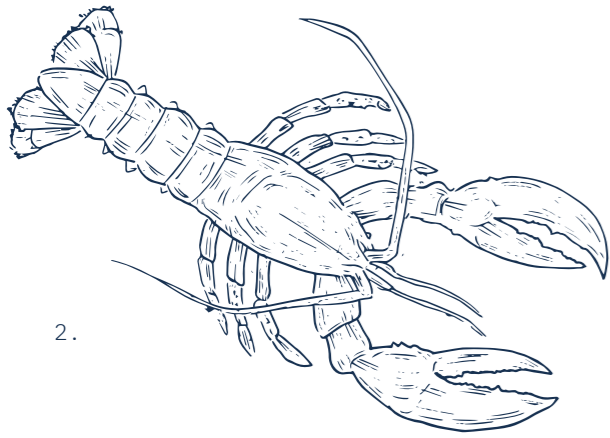
1.

The scientific name of the black boxfish is Procamburus clarkii of the genus Acociles.



75

> CRAB



2.

76



> LOBSTER

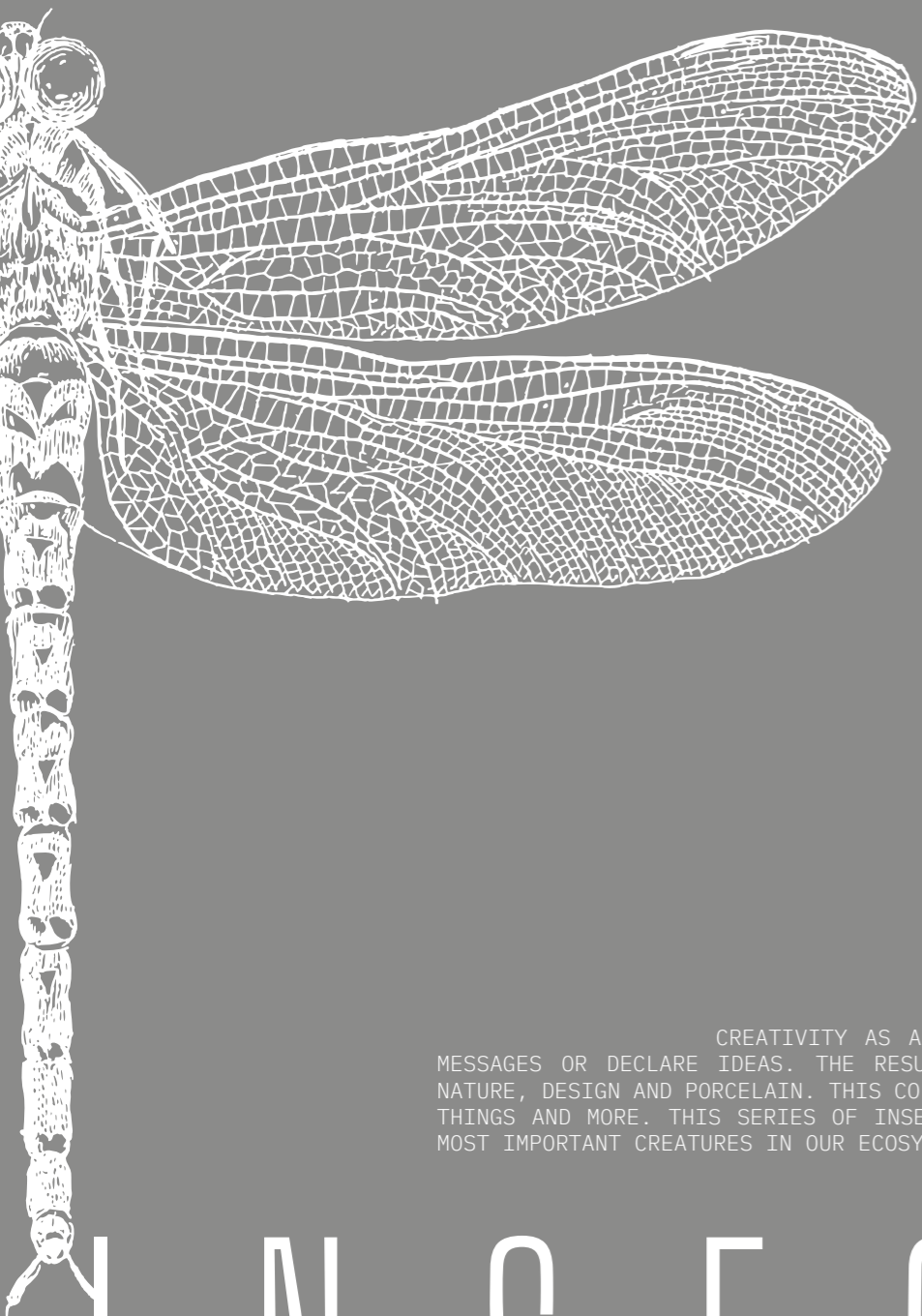
2.

Hommarus gammarus is a large crustacean most commonly referred to as a lobster.



77

AWESOME



CREATIVITY AS A VEHICLE FOR EXPRESSION, TO CONVEY MESSAGES OR DECLARE IDEAS. THE RESULT OF AN ONGOING DIALOGUE BETWEEN NATURE, DESIGN AND PORCELAIN. THIS COLLECTION OF INSECTS CAN BE ALL THESE THINGS AND MORE. THIS SERIES OF INSECTS EXTOLS AND PAYS TRIBUTE TO THE MOST IMPORTANT CREATURES IN OUR ECOSYSTEM.

INSECTS

LLADRÓ

DESIGN

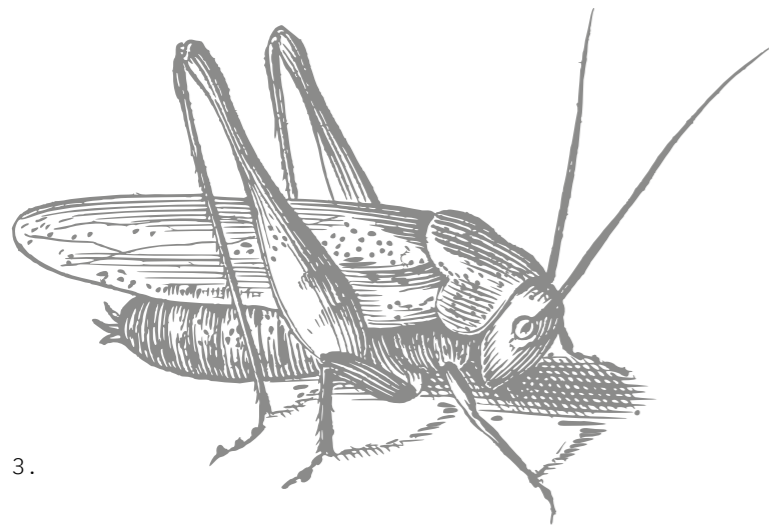
#THEPORCELAINREVOLUTION



79

> HERCULES BEETLE
>> DRAGONFLY

MADE IN HANDCRAFTED PORCELAIN AND METAL, DECORATED WITH PEARLY LUSTERS, THE PERFECTION OF THE COLORS AND TEXTURES MAKES THEM IDEAL TO GIVE AN INTERIOR DEEPER MEANING AND A PLAYFUL TOUCH.



3.

80



81

3.

Caelifera, commonly known as «grasshoppers».

>>> GRASSHOPPER

CREATURES THAT CONNECT US WITH MOTHER NATURE
AND THE PROFOUND MEANING OF LIFE.



4.

82



^ BEE

4. *Anthophila or commonly known as bees, are the pollinizing species par excellence. These little insects play a crucial role in our ecosystem.*

LLADRÓ

DESIGN

_AWESOME INSECTS

83



BLACK

Limited Edition:
1000
units

84

BOLD

LEADING THE WAY BLACK · GOLD





TOUCAN BLACK · GOLD

Everything depends on the color of the lens through which we view the world. Lladró artists have understood the deeper meaning of this truism and have used it to give new life to some of its most successful creations with bold and radically new coloring. Two emphatic yet elegant tones like black and gold are combined to give the pieces a totally different and more contemporary look.

Limited Edition:
1000
units



MACAW BIRD BLACK · GOLD

BLUE

Limited Edition:
500
units

88

BOLD

In this collection Lladró has exchanged canvas for porcelain to explore the expressive strength of the most ultramarine blue in its palette. Striking sculptures steeped in Klein blue add a powerful note of color to any interior.



Limited Edition:
500
units

90



91

Made in limited editions, the matte and satin finishes enhance the forms and textures of the animals while the touches of golden luster underscore their most characteristic elements.



DREAMER LÁOLÚ

92



The Dreamer is the result of the first collaboration with Laolu Senbanjo, a renowned New York-based Nigerian artist. Senbanjo's work, which combines influences from the Yoruba culture from Nigeria with a more contemporary treatment, is expressed in porcelain with two creations that capture to perfection the codes of his creative world.



93

Laolu Senbanjo, also known as "Laolu NYC," is a Nigerian bred, Brooklyn based visual artist, musician, human rights lawyer and activist. Here, his unique graphic language is coupled with the sculptural form to give rise to a singular work with the personal stamp of a committed artist.



Comprising a head and a bust, The Dreamer by Laolu plays with the artist's signature geometric patterns in black and gold on white porcelain.



^ BUST SCULPTURE
<< HEAD SCULPTURE

FIERCE PORTRAITS

96

ANCESTRAL YET
THOROUGHLY
MODERN

>> ANTELOPE MASK BLACK · GOLD

LLADRÓ

DESIGN

#THEPORCELAINREVOLUTION



THE AFRICAN LOOK OF LLADRÓ ANIMAL MASKS IS BASED ON PURE EMOTION AND STRENGTH.



98

^ LION MASK BLACK · GOLD
> BUFFALO MASK BLACK · GOLD

WITH THEIR POWERFUL GEOMETRY IN BLACK AND WHITE AND THE SOPHISTICATED TOUCH OF GOLDEN LUSTER, THESE FIERCE PORTRAITS ARE CHARGED WITH SHEER MAGNETISM.

BETWEEN REALIST AND CONCEPTUAL, THE MASKS CAN BE HUNG ON THE WALL OR PLACED ON A TABLETOP USING A SPECIAL SUPPORT DESIGNED FOR THAT PURPOSE.



99



100

A FIERCE GAZE OBSERVING
US FROM THE WALL.

^ ANTELOPE MASK BLACK · GOLD

LLADRÓ

DESIGN

_ FIERCE PORTRAITS



101

TAG US @LLADRO

#THEPORCELAINREVOLUTION
#BREAKINGTHEMOLDS

^ MANDRILL MASK BLACK · GOLD

Ink

Photography
© Vincent Urbani

102



> DAGGER AND ROSE

ETCHED
THE

ON
SKIN

Creativity is eclectic and diverse, with different sources of inspiration overlapping to produce surprising results, as in the case of the Ink Collection, a series of creations indebted to US illustrations from the 1930s and legendary old school tattoos.

LLADRÓ

DESIGN

_INK COLLECTION



103

104



From designs on the skin to three-dimensional volumes in porcelain. Bright colors and bold lines applied on pieces that transfer urban trends to interior design.

LLADRÓ

DESIGN

_INK COLLECTION

Etched



105

on the skin

WILD PANTHER

Just like their source of inspiration, they are indelible symbols and unique messages.



106



> TRUE LOVE

*Tattoos speak in a distinctive personal language.
Urban trends through the lens of porcelain.*

100HDS 010 · 100HDS 010

107

100HDS 010 · 100HDS 010

STAR WARS™

108



> GROGU
>> STORMTROOPER

Craftsmanship, cinema and design are brought together in a process of exploration and divergent thinking to create a collection dedicated to the leading characters from the famous *Star Wars* saga. The series includes heroines like Queen Amidala™ or Ahsoka Tano™, as well as the adorable Grogu™, the terrifying Darth Vader™, or the fearsome galactic Stormtroopers™.

LLADRÓ

DESIGN

_STAR WARS

v STORMTROOPER

109





^ AHSOKA TANO
> QUEEN AMIDALA IN THE THRONE ROOM

These characters from a galaxy far, far away have gone on to become part of the collective imagination of successive generations and speak of the influence of the movies on popular culture and contemporary design.



Mickey and Minnie

112

©Disney



LLADRÓ

DESIGN

#THEPORCELAINREVOLUTION

Revisiting icons, working with their unmistakable forms and using the influence of design to give them a new meaning.

Brands that join forces, each one contributing its own particular know-how. Combinations that lead to creations updating all-time favorite characters.

113



> MICKEY MOUSE PLATINUM

The *creative* approach is based on the technique of animated cartoons and drawings in black ink on white or plays with monochromatic finishes. And so, Mickey and Minnie are presented here decorated with drawings, painted by hand on porcelain or with magnetic silver luster.

Revisited icons

114



> MINNIE IN BLACK AND WHITE

LLADRÓ

DESIGN

_MICKEY AND MINNIE

115



> MICKEY IN BLACK AND WHITE

CHINESE ZODIAC



116



^ THE DRAGON

The iconography of millennia-old traditions such as the Chinese zodiac is updated when revisited through the lens of design. This is the case with this representation of the twelve animals of the zodiac, which reinterprets them with a conceptual approach and a palette of solid and vibrant colors. This approach seeks to emphasize the symbolic strength embodied by each of the signs.

117



118



LLADRÓ DESIGN

_CHINESE ZODIAC

CHINESE ZODIAC



119



<< THE TIGER
^ THE RABBIT

ORIGAMI

120 > BULL MATTE BLACK

LET'S FOLD!

THE JAPANESE ART OF PAPER FOLDING IS TRANSFERRED TO EXQUISITE PORCELAIN. IN THE ORIGAMI COLLECTION, LLADRÓ MOVES AWAY FROM THE REALIST TREATMENT OF FORMS TO EXPLORE A MORE GEOMETRIC REINTERPRETATION OF THE ANIMAL KINGDOM.

121

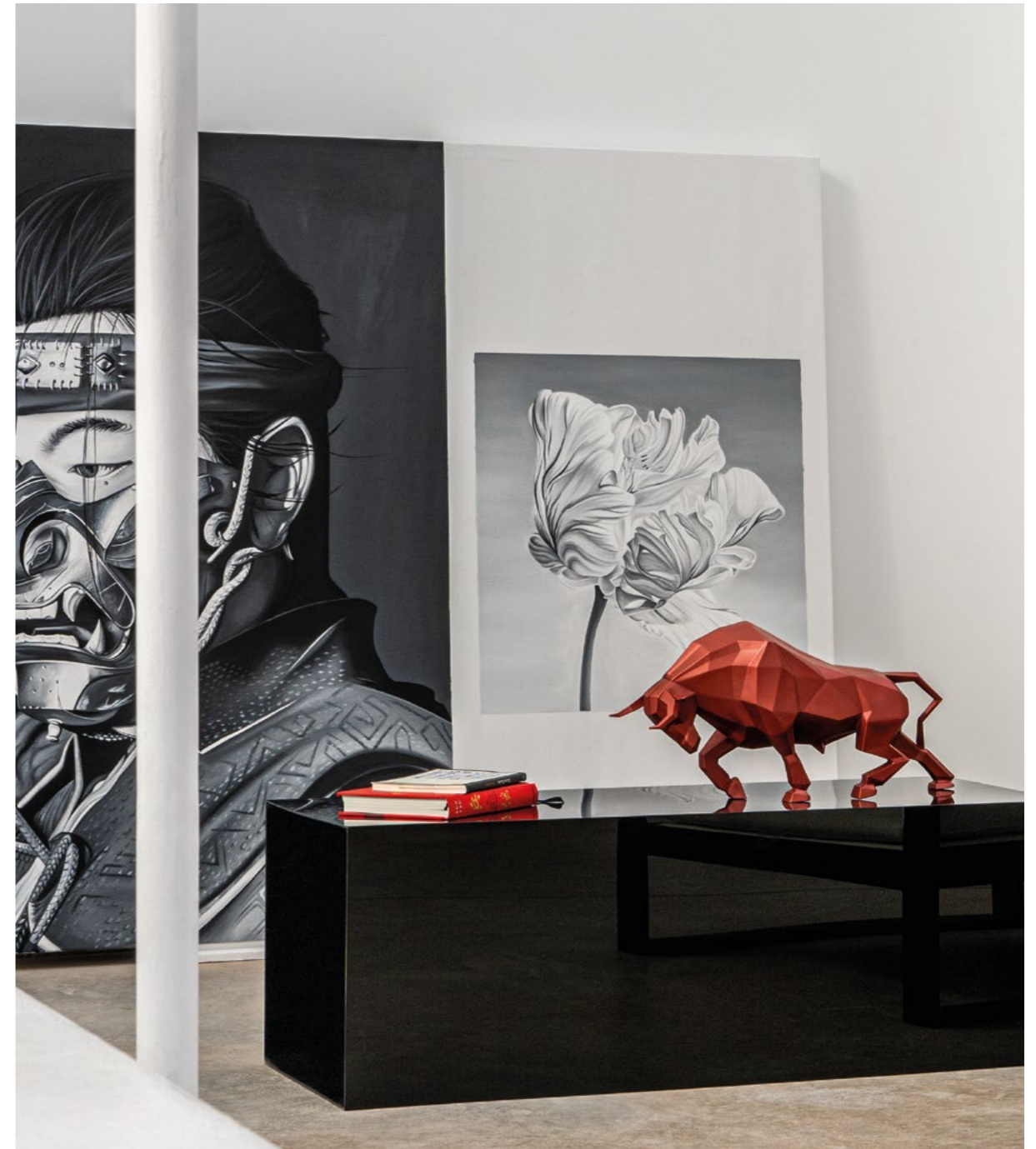


122



**THE STRAIGHT LINES AND SURFACES
ENTAIL A TWOFOLD CHALLENGE WHEN
REPRODUCED IN A LIVING, CHANGING
MATERIAL LIKE PORCELAIN.**

123



> ELEPHANT BLUE
v LION MATTE BLACK

124



LLADRÓ

DESIGN

_ORIGAMI COLLECTION



125

Re-Cyclos

126 Committee



Born in Northampton and London respectively and trained at the Liverpool Art School, Clare Page and Harry Richardson are the members of the Committee creative team. They work with the concept that objects which supposedly have already fulfilled the function they were created for, take on a new life. They explore the everyday with what they call "a combination of pragmatism and imagination".



2

POETRY & HUMOR



128

This is how love is envisaged by Claire Page and Harry Richardson, the British couple behind Committee, the designers of the second instalment of the Re-Cyclos project, in which Lladró flowers take on a special focus.

LOVE II · BLOSSOMS

LLADRÓ

DESIGN

_RE-CYCLOS COLLECTION

BLIND AT THE BEGINNING
FARSIGHTED WITH TIME

129

Their mission was not to renew a classical image but to expand its meaning, adding details that would give it new life. In the case of Love I, II and III they take us on a journey through the various stages of love, blind at the beginning but farsighted with time. The creative duo demonstrated that the most classical elements can spark groundbreaking designs.

LOVE III · BLOSSOMS

COMMITTEE

IN NATURE NOTHING IS CREATED
OR DESTROYED,

EVERYTHING IS TRANSFORMED.



^ CANVAS VASE FLOWERS TAPESTRY

This wonderful concept gave rise to the Re-Cyclos project by Lladró, whose first instalment was signed by Bodo Sperlein. The German designer gave new life to pieces using some of the core elements from the brand's creations. Fairies that take over chandeliers, lamps covered with birds, bottle tops with animal heads, vases shrouded with flowers or birds transformed into delicate jewelry. Existing creations taken from their original context and given a new function are the cornerstones of pieces that expand the brand's creative horizons in surprising new designs with heightened artistic virtuosity.

Bodo Sperlein



Bodo Sperlein gained his experience and developed his professional career in the United Kingdom. His work has always focused on the industrial possibilities of porcelain and ceramics. Sperlein has frequently used porcelain flowers made expressly by British artisans, thus maintaining a tradition almost extinguished in the UK. It was this fact that made Lladró think about working with this artist in the Re-Cyclos project, viewing his creation as being in perfect synchrony with the brand spirit. In fact, the union of Bodo Sperlein and Lladró in Re-Cyclos could well be seen as a true symbiosis.

FACE FACE

132



FACE2FACE
> HUMMINGBIRD
>> SPARROW
>>> TOUCAN

LLADRÓ

DESIGN

#THEPORCELAINREVOLUTION

133



LIFE IS FLOWER

by Yasumichi Morita

Morita is a renowned interior designer behind many major award-winning projects in cities like Tokyo, London and New York. His conception of the spaces and objects he creates is based on an aesthetic that combines minimalism with sumptuous, elegant materials.

Limited edition:
100
units

134



Life always finds a way. Flowers that blossom in each successive cycle represent hope in nature's infinite power to be born anew. The celebrated Japanese designer Yasumichi Morita expresses this wonderful message in a work made for Lladró and inspired by the brand's famous flowers, handmade petal by petal.



135

UNUSUAL FRIENDS

136

LIKE CAT AND DOG.

There are relationships that seem to be condemned to permanent conflict, proverbially incompatible and irreconcilable but that nevertheless sometimes turn out to be unexpectedly friendly.

This collection is an homage to the whimsical and playful spirit of nature, to that wonderful quality of life that means that things often turn out different than we supposed. A tribute to the capacity for surprise and imagination turned into beauty, art and porcelain.



137

Like cat and dog.

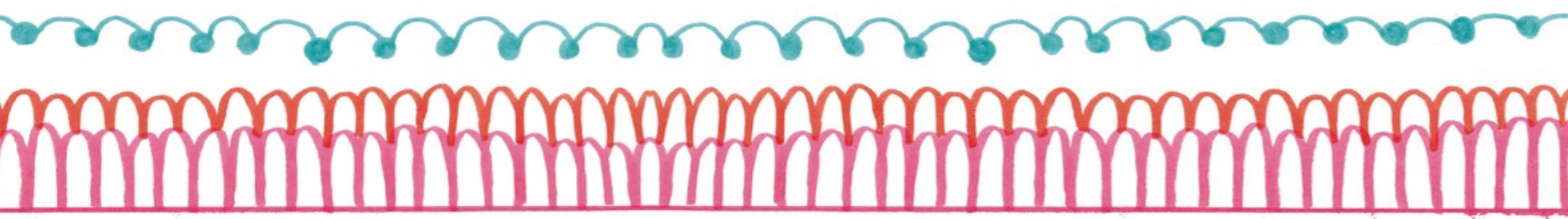


138

^ UNUSUAL FRIENDS · CAT



^ UNUSUAL FRIENDS · DOG



Like
Cat and
Dog



139

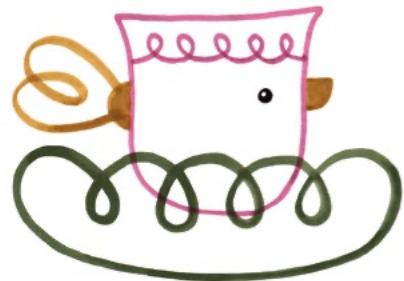
UNEXPECTEDLY HARMONIOUS RELATIONSHIPS.
Sometimes things are not as they seemed doomed to be.

KAWKI

by ALEKSANDRA
ZEROMSKA



140 BIRDS, COFFEE
AND FANTASY
>>> COFFEE SET KAWKI



The sources of inspiration behind the Polish designer Aleksandra Żeromska's creations can be found in her love for animals and her passion for the culture and the folklore of her home country. She then filters these roots through her imagination in order to render them in collections like KAWKI.



141

Kawki, which exemplifies to perfection the possibilities of functional porcelain, takes its name from a Polish word that can mean a small coffee or a kind of bird. Playing with this connection and a graphic style that brings to mind colorful Slavic illustrations, the artist gives this coffee set a whole plethora of different meanings.



Yet another example of the wealth accrued by the creations that come from this rewarding combination of design and crafts.

142



^ SUGAR BOWL KAWKI

LLADRÓ DESIGN



^ SET OF 2 CUPS AND SAUCERS KAWKI

_KAWKI COLLECTION



Aleksandra
Żeromska

143



© Alicja Lesiak

Born in Warsaw, Poland, Aleksandra Żeromska works between art and design, redefining and blurring the boundaries between the two. Her experience with porcelain truly blossomed as a member of the Lladró design team, where she had an opportunity to explore this incredible material alongside the brand's master artisans. Drawing by hand plays a major role in Aleksandra's work, helping her to transform our surrounding reality into new and unexpected forms in a highly personal language.

_ALEKSANDRA ŻEROMSKA

ANIMAL JEWELS

144



Animals Jewels collection presents a series of original designs inspired by the forms of nature and crafted with the essence of genuine handcrafted porcelain jewelry. Clean, geometric lines inspired by Art Deco and a decoration dominated by abyssal black, pearly gray, and golden luster, with accents in emerald green or sapphire blue, shine in these sophisticated and timeless creations, destined to become a legacy you will not want to part with.



Creations with the
spirit of jewelry
handcrafted in
porcelain.

<< SQUIRREL JEWEL
^ FOX JEWEL

ART of the TABLE

146

Art direction by Lladró
Photography by Cualiti
Location: VLC studio

> PARROT PARADE CORAL
>> PARROT'S SCENTED TREASURE RED

#THEPORCELAINREVOLUTION #BREAKINGTHEMOLDS

Parakeets, coral, fish, toucans... are the core symbols of collections with a character all of their own, combining imagination, a sense of *humor* and the excellence of *handcrafted porcelain*.



147



148

Lladró is capable of giving shape to any idea in porcelain. The mastery of the brand's *artisans* and their consummate control of the material make everything *possible and tangible*.

149

Creations grounded in the pragmatism and imagination of functional design and in the *exuberance, sumptuousness and the endless color possibilities of porcelain*. A material with no boundaries for design.

150



From the *striking colors* and *underwater shapes* of the *Coral* collection to the fun-loving tropical objects in the *Toucan* collection.

151



>>>

CORAL CENTERPIECE
 CORAL CAKE TRAY
 CORAL VASE

152



>>>

TOUCAN 2 TALL CRYSTAL GLASSES + 2 STIRRERS SET
TOUCAN ICE BUCKET
TOUCAN GLASS BOTTLE
TOUCAN 1 LOW CRYSTAL GLASS

LLADRÓ

DESIGN

_EDITORIAL

153



ART OF THE TABLE

SHAPES & COLORS

Art direction by Odosdesign
Photography by Josele Castellón
Location: BCN



>> MACAW BIRD VASE

Sometimes functionality, other times simply and *wonderfully visual enjoyment*. In porcelain design both options are the perfect excuse to spread beauty and design.

156



- << STARLING I PURPLE
- << STARLING II BLACK
- >> STARLING I BLACK
- >> STARLING II PURPLE

157



158



WILD TOTEMS
 > PANTHER WOMAN
 >> TIGER MAN

LLADRÓ DESIGN

_EDITORIAL

159



> LITTLE TURTLE
 >> TURTLE

_SHAPES & COLORS

160



>> THE FAMILY PORTRAIT by Jaime Hayon

THE ROCKING CHICKEN RIDE by Jaime Hayon



161

162



UNDERWATER

- ^ MUMMY BEAR AND BABIES
- >> WHITE RHINO

Infinite shades that enrich the forms.

WHALES

- > WHALE
- >> LITTLE WHALE

163



164



BIRD BOXES
 > QUETZAL BOX
 >> HUMMINGBIRD BOX

> MACAW BIRD VASE RED
 >> MACAW BIRD VASE

LLADRÓ DESIGN

_EDITORIAL



165



_SHAPES & COLORS

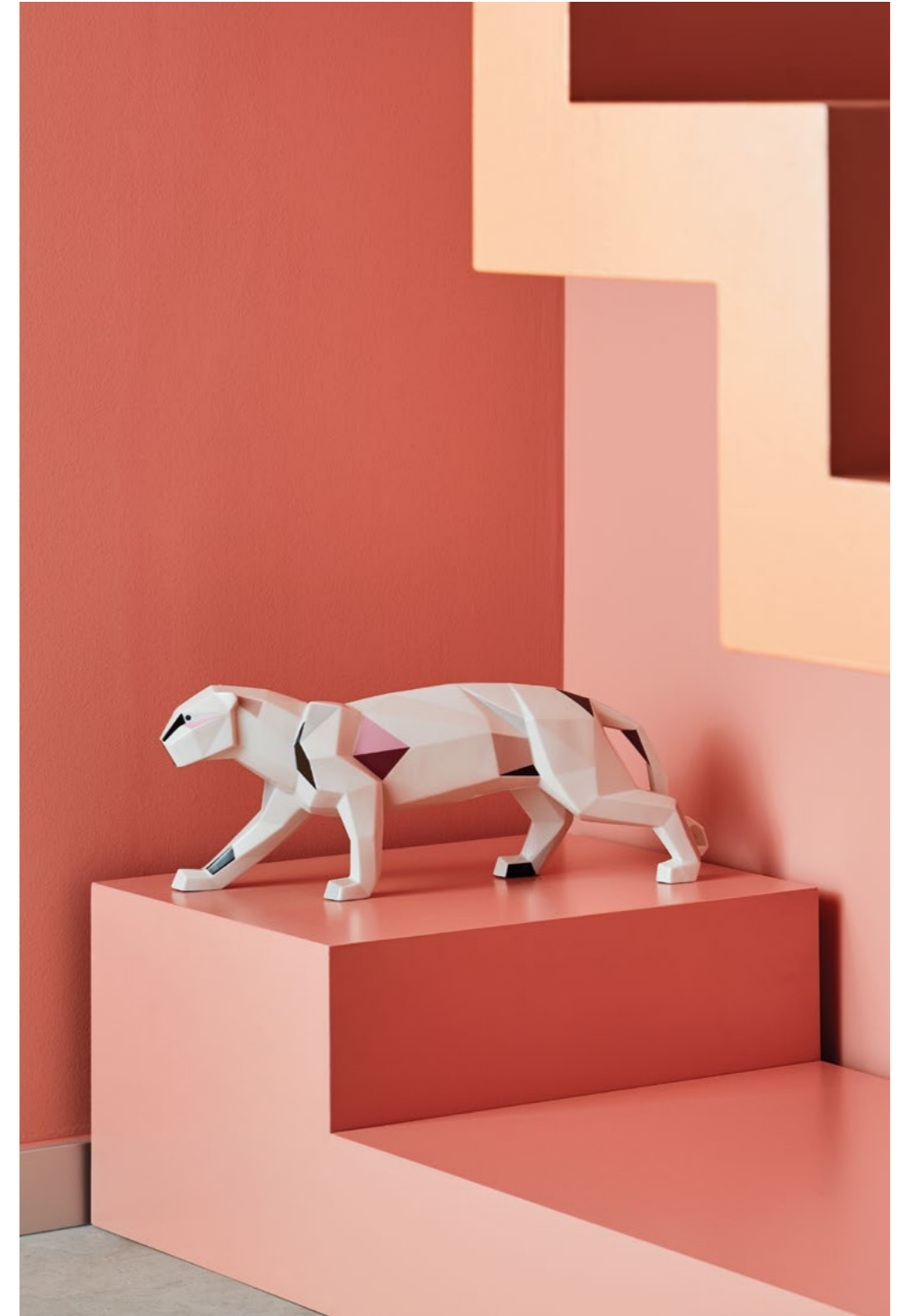
The *art* we surround ourselves with is what defines us, it is the vehicle through which we express our tastes, preferences and even circumstances.

Creations that arouse subjective opinions, making them even more *powerful* and *transversal*.



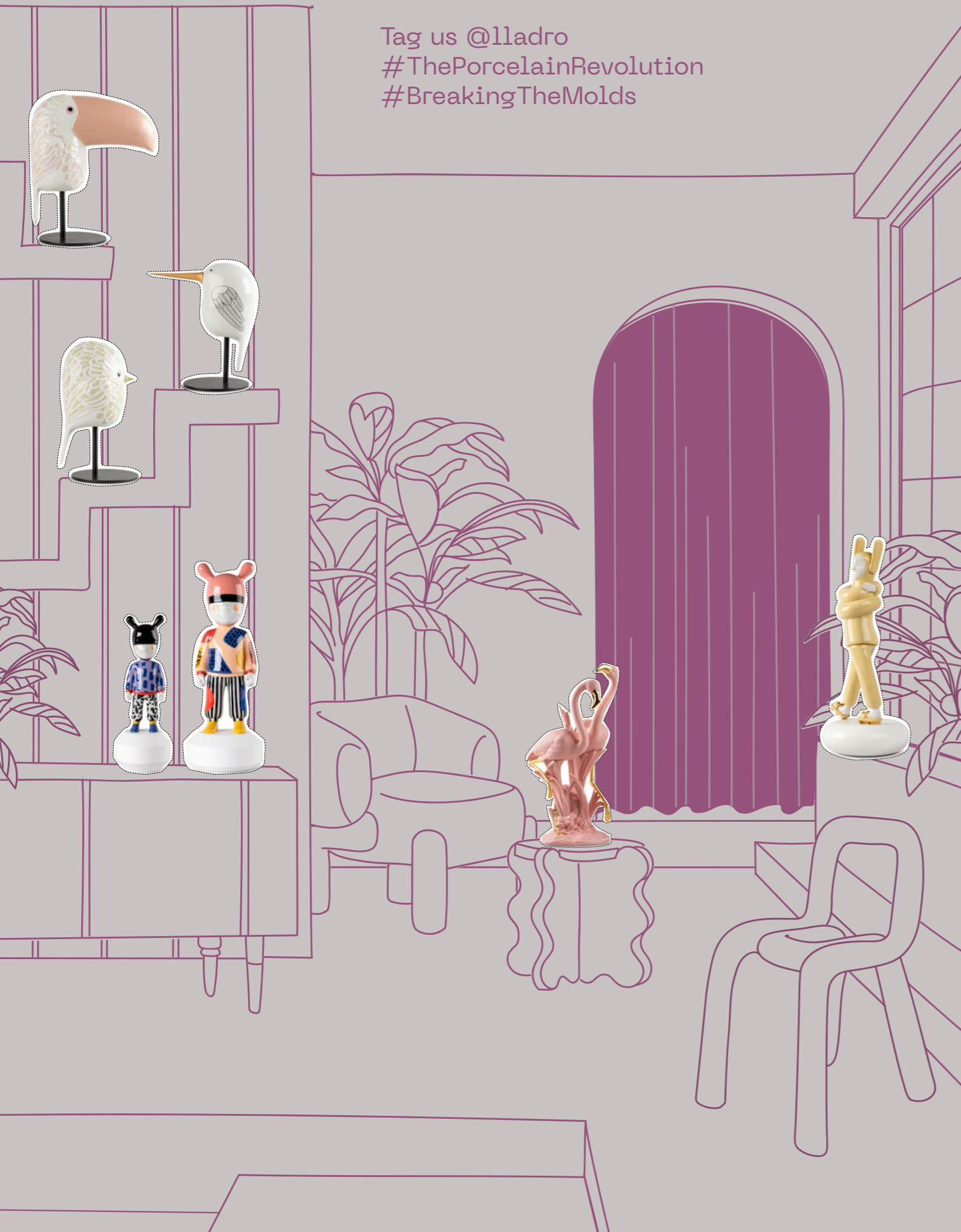


168



169

Tag us @lladro
#ThePorcelainRevolution
#BreakingTheMolds



- 172 THE GUEST
- 176 EMBRACED BY JAIME HAYON
- 176 THE FANTASY BY JAIME HAYON
- 178 BOLDBLACK
- 178 BOLDRED
- 178 THE FLAMINGOS
- 179 BOLDBLUE
- 180 UNDERWATER
- 180 WHALES
- 180 TURTLES
- 181 AWESOME INSECTS
- 181 KINGS OF THE SEA
- 182 FIERCE PORTRAITS
- 182 WILD TOTEMS
- 183 CHINESE ZODIAC
- 183 INK
- 184 DISNEY
- 185 STAR WARS
- 186 ORIGAMI
- 188 THE DREAMER BY LALOU
- 188 LIFE IS FLOWER BY YASUMICHI MORITA
- 189 RECYCLOS BY BODO SPERLEIN & COMMITTEE
- 189 FACE2FACE
- 190 STARLINGS
- 190 UNUSUAL FRIENDS
- 191 KAWKI BY ALEKSANDRA ŽEROMSKA
- 191 ANIMAL JEWELS
- 192 THE PARROT PARTY
- 193 MACAW BIRD
- 193 BIRD BOXES
- 194 CORAL
- 194 EYES
- 195 TOUCAN

TECHNICAL DATA

THE **GUEST** / **TWO SIZES**

BIG SIZE 20 1/2 x 7 1/2 x 7 1/2
52 x 19 x 19 cm

SMALL SIZE 11 3/4 x 4 1/4 x 4 1/4
30 x 11 x 11 cm

BLOCK COLORS



The white Guest
Big
01007277

Base included

The white Guest
Little
01007732

Base included

The black Guest
Big
01007282

Base included

The black Guest
Little
01007733

Base included



The red Guest
Little
01007734

Base included

The dark blue Guest
Little
01007750

Base included

172

173

METALLIC COLORS



The silver Guest
Little
01007740

Base included

The golden Guest
Little
01007739

Base included

The Guest Little
Purple on yellow
01007746

Base included

The metallic red Guest
Little
01007754

Base included



The yellow Guest
Little
01007735

Base included

The green Guest
Little
01007737

Base included

The pink Guest
Little
01007763

Base included

The orange Guest
Little
01007749

Base included

The blue Guest
Little
01007736

Base included

BY CAMILLE WALALA



The Guest by Camille Walala - Big
01007761
Limited edition of 300 pieces
Base included

The Guest by Camille Walala - Little
01007762
Numbered edition
Base included

BY JAIME HAYON



THE GUEST

The Guest by Jaime Hayon - Big
01007278
SOLD OUT
Limited edition of 250 pieces
Base included

The Guest by Jaime Hayon - Little
01007283
Numbered edition
Base included

BY KZENG JIANG



The Guest by Kzeng Jiang - Big
01007757
Limited edition of 300 pieces
Base included

The Guest by Kzeng Jiang - Little
01007758
Numbered edition
Base included

BY DEVILROBOTS



The Guest by Devilrobots - Big
01007280
SOLD OUT
Limited edition of 250 pieces
Base included

The Guest by Devilrobots - Little
01007285
Numbered edition
Base included

BY RICARDO CAVOLO



The Guest by Ricardo Cavolo - Big
01007747
SOLD OUT
Limited edition of 250 pieces
Base included

The Guest by Ricardo Cavolo - Little
01007748
Numbered edition
Base included

BY GARY BASEMAN



The Guest by Gary Baseman - Big
01007889
SOLD OUT
Limited edition of 250 pieces
Base included

The Guest by Gary Baseman - Little
01007890
Numbered edition
Base included

BY PAUL SMITH



THE GUEST

The Guest by Paul Smith - Big
01007730
SOLD OUT
Limited edition of 250 pieces
Base included

The Guest by Paul Smith - Little
01007731
SOLD OUT
Numbered edition
Base included

BY ROLITO



The Guest by Rolito - Big
01007897
SOLD OUT
Limited edition of 250 pieces
Base included

The Guest by Rolito - Little
01007898
Numbered edition
Base included

BY TIM BISKUP



The Guest by Tim Biskup - Big
01007279
SOLD OUT
Limited edition of 250 pieces
Base included

The Guest by Tim Biskup - Little
01007284
Numbered edition
Base included

BY HENN KIM



The Guest by Henn Kim - Big
01007752
SOLD OUT
Limited edition of 250 pieces
Base included

The Guest by Henn Kim - Little
01007753
Numbered edition
Base included

BY SUPAKITCH



The Guest by Supakitch - Big
01007755
Limited edition of 300 pieces
Base included

The Guest by Supakitch - Little
01007756
Numbered edition
Base included

EMBRACED



Embraced (yellow)
01009652

57 x 25 x 23 cm
22 1/2 x 9 3/4 x 9"



Embraced (pink)
01009654

57 x 25 x 23 cm
22 1/2 x 9 3/4 x 9"



Embraced
01009653

57 x 25 x 23 cm
22 1/2 x 9 3/4 x 9"

Limited edition of 500 pieces

THE FANTASY COLLECTION



The Lover I
01007252

38 x 22 x 20 cm
15 x 8 3/4 x 7 3/4"

Base included



The Lover II
01007253

38 x 22 x 20 cm
15 x 8 3/4 x 7 3/4"

Base included



The Lover III
01007254

38 x 22 x 20 cm
15 x 8 3/4 x 7 3/4"

Base included

THE FANTASY COLLECTION

176



The Family Portrait
01007255

35 x 34 x 27 cm
13 3/4 x 13 1/2 x 10 3/4"

Base included

177



Conversation Vase II *
01007258

52 x 31 x 31 cm
20 1/2 x 12 1/4 x 12 1/4"



Medium Conversation Vase
01007596

47 x 31 x 31 cm
18 1/2 x 12 1/4 x 12 1/4"

Limited edition of 500 pieces



Small Conversation Vase
01007597

39 x 27 x 27 cm
15 1/4 x 10 3/4 x 10 3/4"

Limited edition of 500 pieces



The Rocking Chicken Ride
01007256

24 x 21 x 13 cm
9 1/2 x 8 1/4 x 5"

Base included



The Clown - lamp
01007271 (CE) | 01007272 (US)
01007273 (JP) | 01007274 (UK)

60 x 35 x 35 cm
23 1/2 x 13 3/4 x 13 3/4"

Base included
Touch dimmer system on the nose.



Conversation Vase I *
01007257

52 x 31 x 31 cm
20 1/2 x 12 1/4 x 12 1/4"



* The vases 01007257 and 01007258 can tie in with The Lover.

BOLD BLACK



Rhino (black-gold)
01009595

22 x 45 x 19 cm
8 3/4 x 17 3/4 x 7 1/2"

Limited edition of 1.000 pieces



Gorilla lamp (black-gold)
01024166 (CE) | 01024167 (UK)
01024168 (US) | 01024169 (JP)

60 x 40 x 40 cm
23 1/2 x 15 3/4 x 15 3/4"



Leading the way (black-gold)
01009581

27 x 36 x 14 cm
10 3/4 x 14 1/4 x 5 1/2"

Limited edition of 1.000 pieces

BOLD BLUE



Mummy bear and babies (blue-gold)
01009565

19 x 39 x 25 cm
7 1/2 x 15 1/4 x 9 3/4"

Limited edition of 500 pieces



Koi (blue-gold)
01009579

31 x 21 x 24 cm
12 1/4 x 8 1/4 x 9 1/2"

Limited edition of 750 pieces



Attentive bunny (blue-gold)
01009448

11 x 12 x 7 cm
4 1/4 x 4 3/4 x 2 3/4"

178



Macaw bird (black-gold)
01009577

45 x 22 x 20 cm
17 3/4 x 8 3/4 x 7 3/4"

Limited edition of 1.000 pieces



Toucan (black-gold)
01009712

38 x 19 x 28 cm
15 x 7 1/2 x 11"

Limited edition of 1.000 pieces



Owl sculpture (black-gold)
01009692

41 x 25 x 22 cm
16 1/4 x 9 3/4 x 8 3/4"

Limited edition of 1.000 pieces



Little Monkey (blue-gold)
01009548

23 x 17 x 17 cm
9 x 6 3/4 x 6 3/4"

Limited edition of 500 pieces



Rhino (blue-gold)
01009471

22 x 45 x 19 cm
8 3/4 x 17 3/4 x 7 1/2"

SOLD OUT
Limited edition of 500 pieces



Penguin family (blue-gold)
01009539

25 x 16 x 14 cm
9 3/4 x 6 1/4 x 5 1/2"

Limited edition of 500 pieces

179

BOLD RED



Gorilla (metallic red)
01009747

37 x 23 x 23 cm
14 1/4 x 9 x 9"

Limited edition of 50 pieces
Base included



Macaw bird (red-gold)
01009690

45 x 22 x 20 cm
17 3/4 x 8 3/4 x 7 3/4"

Limited edition of 300 pieces

THE FLAMINGOS



The Flamingos (pink)
01009675

33 x 15 x 17 cm
13 x 6 x 6 3/4"



Gorilla (blue-gold)
01009403

36 x 22 x 23 cm
14 1/4 x 8 3/4 x 9"

SOLD OUT
Limited edition of 500 pieces



Courting Cranes (blue-gold)
01009400

28 x 18 x 12 cm
11 x 7 x 4 3/4"

SOLD OUT
Limited edition of 300 pieces



Macaw Bird (blue-gold)
01009401

45 x 22 x 20 cm
17 3/4 x 8 3/4 x 7 3/4"

SOLD OUT
Limited edition of 300 pieces

UNDERWATER



White rhino - Underwater
01009739

22 x 45 x 19 cm
8 ¾ x 17 ¾ x 7 ½"



Mummy bear and babies - Underwater
01009740

19 x 39 x 25 cm
7 ½ x 15 ¼ x 9 ¾"

180



Whale
01009569

13 x 48 x 25 cm
5 x 19 x 9 ¾"



Little whale
01009570

11 x 27 x 16 cm
4 ¼ x 10 ¾ x 6 ¼"

WHALES



Turtle
01009673

10 x 36 x 32 cm
4 x 14 ¼ x 12 ½"



Little turtle
01009674

9 x 27 x 24 cm
3 ½ x 10 ¾ x 9 ½"

TURTLES

AWESOME INSECTS



Bee
01009592

14 x 26 x 20 cm
6 x 10 ¼ x 7 ¾"



Rhinoceros beetle
01009425

12 x 26 x 16 cm
4 ¾ x 10 ¼ x 6 ¼"



Rhinoceros beetle (matte white)
01009478

12 x 26 x 16 cm
4 ¾ x 10 ¼ x 6 ¼"



Grasshopper
1009544

11 x 27 x 26 cm
4 ¼ x 10 ¾ x 10 ¼"



Hercules beetle
01009426

16 x 25 x 20 cm
6 ¼ x 9 ¾ x 7 ¾"



Dragonfly
01009427

20 x 23 x 20 cm
7 ¾ x 9 x 7 ¾"

181

KINGS OF THE SEA



Lobster (blue)
01009693

13 x 45 x 22 cm
5 x 17 ¾ x 8 ¾"



Crab (red)
01009694

14 x 28 x 28 cm
5 ½ x 11 x 11"

FIERCE PORTRAITS

CHINESE ZODIAC



Buffalo mask (black-gold)
01009594

36 x 67 x 22 cm
14 1/4 x 26 1/2 x 8 3/4"

Mandrill mask (black-gold)
01009405

44 x 31 x 14 cm
17 1/4 x 12 1/4 x 5 1/2"

Owl mask (black-gold)
01009406

35 x 32 x 14 cm
13 3/4 x 12 1/2 x 5 1/2"

The Dragon (red-gold)
01009713

13 x 16 x 24 cm
5 x 6 1/4 x 9 1/2"

The Tiger (red-gold)
01009549

9 x 14 x 11 cm
3 1/2 x 5 1/2 x 4 1/4"

The Rabbit (red-gold)
01009590

21 x 10 x 10 cm
8 1/4 x 4 x 4"

182



Antelope mask (black-gold)
1009541

57 x 39 x 18 cm
22 1/2 x 15 1/4 x 7"

Lion mask (black-gold)
01009566

60 x 38 x 30 cm
23 1/2 x 15 x 11 3/4"

Tiger mask (black-gold)
01009404

38 x 30 x 23 cm
15 x 11 3/4 x 9"

INK



Wild panther
01009535

17 x 38 x 17 cm
6 3/4 x 15 x 6 3/4"

True love
01009534

30 x 31 x 15 cm
11 3/4 x 12 1/4 x 6"

183

WILD TOTEMS



Lion Mask/ Wild Nature
01009703

60 x 38 x 30 cm
23 1/2 x 15 x 11 3/4"

Panther woman
01009428

42 x 10 x 11 cm
16 1/2 x 4 x 4 1/4"

Tiger man
01009429

44 x 14 x 10 cm
17 1/4 x 5 1/2 x 4"



Dagger and rose
01009556

36 x 15 x 12 cm
14 1/4 x 6 x 4 3/4"

Limited edition of 400 pieces

DISNEY



Mickey Mouse in Black and white
01009601

31 x 16 x 15cm
12 1/4 x 6 1/4 x 6



Mickey Mouse Platinum
01009706

31 x 16 x 15cm
12 1/4 x 6 1/4 x 6



Minnie Mouse in Black and white
01009707

31 x 16 x 15cm
12 1/4 x 6 1/4 x 6



Princess Leia's New hope
01009412

35 x 14x 15cm
13 3/4 x 5 1/2 x 6"



Queen Amidala in the Throne Room
01009413

55 x 32x 32cm
21 3/4 x 12 1/2 x 12 1/2"

Limited edition of 1000 pieces



Rey
01009414

39 x 23x 16cm
15 1/4 x 9 x 6 1/4"

184



Darth Vader
01009421

47x 47x 35cm
18 1/2 x 18 1/2 x 13 3/4"

SOLD OUT
Limited edition of 504 pieces



Darth Vader (golden)
01009704

47x 47x 35cm
18 1/2 x 18 1/2 x 13 3/4"

SOLD OUT
Limited edition of 70 pieces



Stormtrooper
01009714

40x 16x 17cm
15 3/4 x 6 1/4 x 6 3/4"

Limited edition of 1138 pieces

185



Ashoka Tano
01009420

56 x 24 x 29 cm
22 x 9 1/2 x 11 1/2"

Limited edition of 1000 pieces



Grogu
01009422

15x 14 x 11cm
6 x 5 1/2 x 4 1/4"



Bull (matte black)
01009593

24 x 50 x 16 cm
9 1/2 x 19 3/4 x 6 1/4"

Bull (metallic red)
01009729

24 x 50 x 16 cm
9 1/2 x 19 3/4 x 6 1/4"

Lion (matte black)
01009746

25 x 48 x 14 cm
9 3/4 x 19 x 5 1/2"

Panther (silver)
01009591

19 x 50 x 12 cm
7 1/2 x 19 3/4 x 4 3/4"

Panther
01009298

19 x 50 x 12 cm
7 1/2 x 19 3/4 x 4 3/4"

Panther (blue)
01009456

19 x 50 x 12 cm
7 1/2 x 19 3/4 x 4 3/4"

186



187

Dragon
01002033

36x 49x 18 cm
14 1/4 x 19 1/4 x 7"

Limited edition of 777 pieces

Elephant (blue)
01009560

43 x 52 x 20 cm
17 x 20 1/2 x 7 3/4"

Elephant (black)
01009559

43 x 52 x 20 cm
17 x 20 1/2 x 7 3/4"

Panther (glazed black)
01009496

19 x 50 x 12 cm
7 1/2 x 19 3/4 x 4 3/4"

Panther (metallic red)
01008750

19 x 50 x 12 cm
7 1/2 x 19 3/4 x 4 3/4"

Panther (iridescent)
01009691

19 x 50 x 12 cm
7 1/2 x 19 3/4 x 4 3/4"



Owl
01009265

16 x 8 x 9 cm
6 1/4 x 3 1/4 x 3 1/2"

Rabbit
01009264

12 x 13 x 7 cm
4 3/4 x 5 x 2 3/4"

Frog
01009266

5 x 10 x 8 cm
2 x 4 x 3 1/4"

Panther (coral)
01009457

19 x 50 x 12 cm
7 1/2 x 19 3/4 x 4 3/4"

Panther (Golden)
01009580

19 x 50 x 12 cm
7 1/2 x 19 3/4 x 4 3/4"

Panther (matte black)
01009299

19 x 50 x 12 cm
7 1/2 x 19 3/4 x 4 3/4"

THE DREAMER



The Dreamer by Laolu-Bust
01009667

32 x 38 x 22cm
12 1/2 x 11 x 8 3/4"

Limited edition of 300 pieces



The Dreamer by Laolu- Head
01009668

18 x 27 x 23cm
7 x 10 3/4 x 9"

Limited edition of 1500 pieces



Love I (blossoms)
01007231

32 x 21 x 15 cm
12 1/2 x 8 1/4 x 6"



Love II (blossoms)
01007232

27 x 17 x 14 cm
10 3/4 x 6 3/4 x 5 1/2"



Love III (blossoms)
01007233

34 x 17 x 11 cm
13 1/2 x 6 3/4 x 4 1/4"

RE-CYCLOS



Canvas vase flowers tapestry
01007077

38 x 23 x 20 cm
15 x 9 x 7 3/4"

LIFE IS FLOWER



Life is flower (black&white)
01008796

18 x 32 x 25 cm
7 x 12 1/2 x 9 3/4"

Limited edition of 100 pieces
Base included

FACE 2 FACE

KAWKI



Face 2 face - Toucan
01009563
29 x 23 x 13 cm
11 1/2 x 9 x 5"

Face 2 face - Hummingbird
01009561
24 x 21 x 13 cm
9 1/2 x 8 1/4 x 5"

Face 2 face - Sparrow
01009562
26 x 15 x 13 cm
10 1/4 x 6 x 5"



Sugar Bowl Kawki
01009659
21x14x17 cm
8 1/2 x 5 1/2 x 6 3/4"



Coffee Pot Kawki
01009660
29 x 15 x 10 cm
11 1/2 x 6 x 4"



Set Of 2 Cups and Saucers
Kawki
01009661
8 x 25 x 13 cm
3 1/4 x 9 3/4 x 5"

STARLINGS

190



Starling I (black)
01009676
17x 19x 9cm
6 3/4 x 7 1/2 x 3 1/2"

Starling II (black)
01009677
14 x 19x 9cm
5 1/2 x 7 1/2 x 3 1/2"

Starling I (purple)
01009678
17x 19x 9cm
6 3/4 x 7 1/2 x 3 1/2"

Starling II (purple)
01009679
14 x 19x 9cm
5 1/2 x 7 1/2 x 3 1/2"



Coffee Set Kawki
01009663

Milk Jug Kawki
01009662
13x 10 x 8 cm
5 x 4 x 3 1/4"

191

UNUSUAL FRIENDS

ANIMAL JEWELS



Unusual friends-CAT
01009552
19 x 9 x 11 cm
7 1/2 x 3 1/2 x 4 1/4"

Unusual friends-DOG
01009553
23 x 7 x 10 cm
9 x 2 3/4 x 4"



Squirrel jewel
01009726
22 x 23 x 14 cm
8 3/4 x 9 x 5 1/2"



Fox jewel
01009727
32 x 21 x 18 cm
12 1/2 x 8 1/4 x 7"

THE PARROT PARTY

MACAW BIRD



Parrot Parade (coral)
01007846

41 x 25 x 20 cm
16 1/4 x 9 3/4 x 7 3/4"

Parrot Parade (blue)
01007850

41 x 25 x 20 cm
16 1/4 x 9 3/4 x 7 3/4"

Parrot's scented Treasure (green)
01040150

27 x 25 x 14 cm
10 3/4 x 9 3/4 x 5 1/2"

Macaw Bird Vase
01009540

56 x 29 x 24 cm
22 x 11 1/2 x 9 1/2"

Macaw Bird Vase (Red)
01009686

56 x 29 x 24 cm
22 x 11 1/2 x 9 1/2"

192



Parrot Romance
01007848

29 x 41 x 41 cm
11 1/2 x 16 1/4 x 16 1/4"

Parrot Hang I
01007853

17 x 15 x 14 cm
6 3/4 x 6 x 5 1/2"

Parrot Hang II
01007854

19 x 15 x 11 cm
7 1/2 x 6 x 4 1/4"

BIRD BOXES



193

Quetzal box
01009650

26 x 21 x 20 cm
10 1/4 x 8 1/4 x 7 3/4"

Hummingbird box
01009651

29 x 18 x 16 cm
11 1/2 x 7 x 6 1/4"



Parrot table lamp - black
01024152 (CE)
01024153 (UK)
01024154 (US)
01024155 (JP)

45 x 20 x 20 cm
17 3/4 x 7 3/4 x 7 3/4"

Parrot wall light (right) - black
01024157 (CE/UK)
01024158 (US)
01024159 (JP)

21 x 13 x 14 cm
8 1/4 x 5 x 5 1/2"

Parrot Vanity
01007849

37 x 27 x 16 cm
14 1/2 x 10 3/4 x 6 1/4"

CORAL



Coral Vase
01009477

44 x 16 x 16 cm
17 1/4 x 6 1/4 x 6 1/4"



Coral Cake Tray
01009476

40 x 31 x 31 cm
15 3/4 x 12 1/4 x 12 1/4"



Coral Centerpiece
01009475

25 x 39 x 39 cm
9 3/4 x 15 1/4 x 15 1/4"



Toucan Ice bucket
01009463

41 x 22 x 22 cm
16 1/4 x 8 3/4 x 8 3/4"



Toucan Glass bottle
01009464

34 x 12 x 12 cm
13 1/2 x 4 3/4 x 4 3/4"



**Toucan 2 tall crystal glasses
+ 2 stirrers set**
01009465

20 x 18 x 18 cm
7 3/4 x 7 x 7"

194



Coral Candle
01040254

22 x 14 x 14 cm
8 3/4 x 5 1/2" x 5 1/2"

195



Toucan 1 low crystal glass
01009466

9 x 9 x 9 cm
3 1/2 x 3 1/2 x 3 1/2"



Toucan 1 tall crystal glass
01009467

14 x 8 x 8 cm
5 1/2 x 3 1/4 x 3 1/4"

EYES



Lover's eyes jewelry box
01009666

21 x 17 x 18 cm
8 1/4 x 6 3/4 x 7"



Lover's eyes tray
01009665

6 x 34 x 26 cm
2 1/4 x 13 1/2 x 10 1/4"



Lover's eyes vase
01009664

39 x 21 x 22 cm
15 1/4 x 8 1/4 x 8 3/4"

GRAPHIC DESIGN

ODOSDESIGN
LLADRÓ TEAM

PHOTOGRAPHY

ODOSDESIGN + JOSELE CASTELLÓ
CUALITI PHOTO STUDIO
ARTERO FOTÓGRAFOS
VINCENT URBANI
LLADRÓ TEAM

3D IMAGE

LAVS CREATIVE STUDIOS

ACKNOWLEDGEMENTS

ENRIC PASTOR
TEULAT
HOTEL BARCELÓ TORRE DE MADRID

PRINTED BY

FERNANDO GIL



#THEPORCELAINREVOLUTION

#BREAKINGTHEMOLDS

#LLADRÓ

CREDITS



LLADRÓ

HANDMADE PORCELAIN
Spain

VALENCIA, SPAIN

(+34) 963 187 000
(+34) 900 211 010 (TOLL FREE)

CUSTOMER-SERVICES@LLADRO.COM

WWW.LLADRO.COM

